

Parts List				
ITEM	QTY	PART NUMBER	DESCRIPTION	
1	1	202006	Power Amplifier, RFF, Wide Input	
3	1	250403	Chassis, MM to PA	
4	1	203004	Micromodem 6713 Coprocessor	
5	1	201005b	Micromodem 2.0	
6	1	250417	Chassis Micromodem 2 Accessory Spacer 7mm	
7	1	250407	Chassis, MM to Accessory	
8	1	203001	Micromodem MCHA Board	

Specifications:

Part Numbering: 250032-xxxx
 where -xxxx represents the magnetic matching network required for a particular transducer.

Weight: 0.75lbs / 340g

Input Voltage Range: 10.5V-48VDC (>36VDC may require special configuration)

Power Consumption (As of 2018-01 with appropriate hardware firmware revisions):

Hibernate: 0.96mW @ 12VDC

Idle: 0.82W @ 12VDC

Receive (FSK): 0.82W @ 12VDC

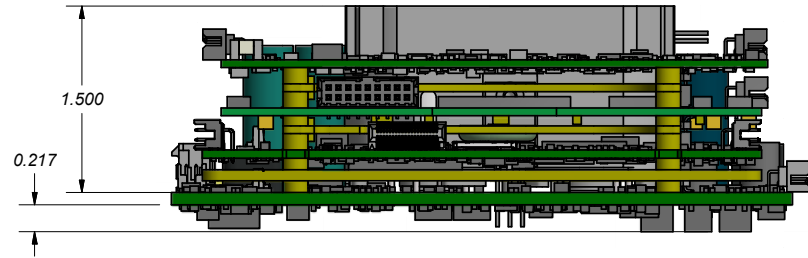
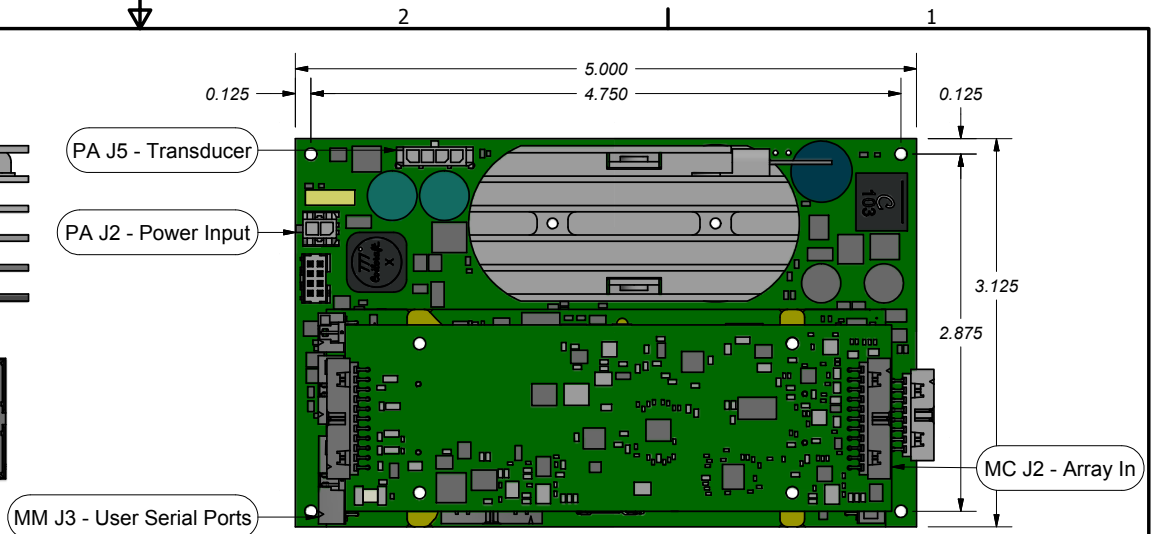
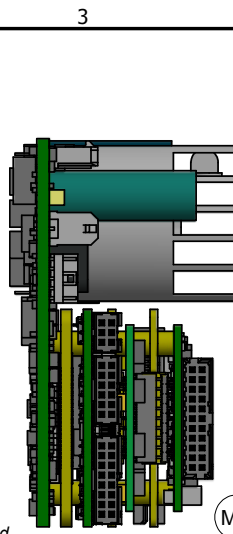
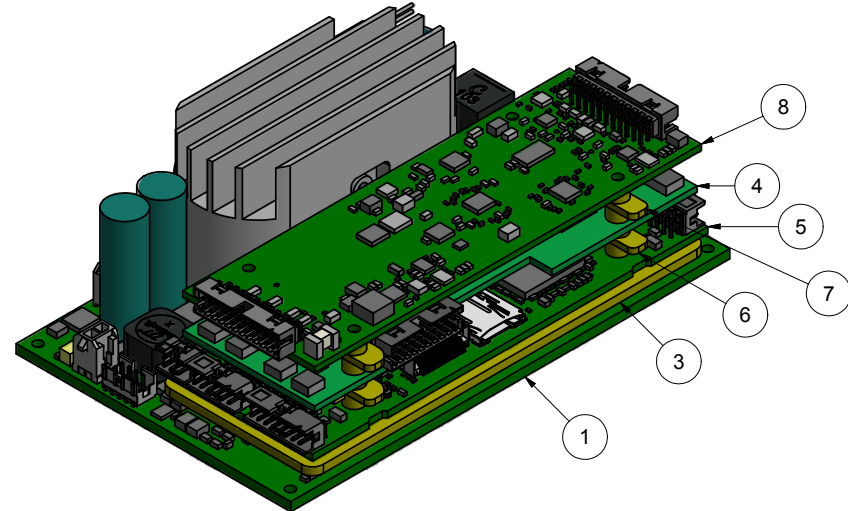
Receive (S-PSK): 2.74W @ 12VDC

Receive (M-PSK): xxW @ 12VDC with 4-Element Array Dependent on Array Used

Transmit: Dependent on Transducer and Matching Network

Handling: High voltage DC components are present and exposed on the bottom side of the power amplifier. Please take the necessary precautions to avoid shorting circuitry on the board. A minimum of 0.313" clearance is recommended between the bottom side of the circuit board and the nearest mechanical component.

Schematic: Refer to 250032-SCH for typical wiring inter-connects.



Unless Otherwise Noted:
 1. Tolerances: Decimal Angular
 .XX ± 0.01 ± 1 Deg
 .XXX ± 0.005
 2. Dimensions are in Inches
 3. Break All Sharp Edges
 4. Surface Finishes Critical for O-Ring Surfaces
 5. Material:
 6. Finish:

Woods Hole Oceanographic Institution
Acoustic Communications Group
 86 Water Street, Dept. 4 MS 18, Woods Hole, MA 02543

Drawing Title:
Micromodem 2 Multi-RX PSK with RFF Power Amplifier

Designer: Keenan Ball 10/11/2018
 Engineer: Keenan Ball 10/11/2018

Size: B	Cage Code: 88846	Drawing Number: 250032-ASM	Rev: B
---------	------------------	----------------------------	--------