

Parts List				
ITEM	QTY	PART NUMBER	DESCRIPTION	
1	1	202006	Power Amplifier, RFF, Wide Input	
2	1	250403	Chassis, MM to PA	
3	1	203004	Micromodem 6713 Coprocessor	
4	1	250417	Chassis Micromodem 2 Accessory Spacer 7mm	
5	1	201005b	Micromodem 2.0	

Specifications:

Part Numbering: 250035-xxxx
 where -xxxx represents the magnetic matching network required for a particular transducer. Matching network specification may change over time.

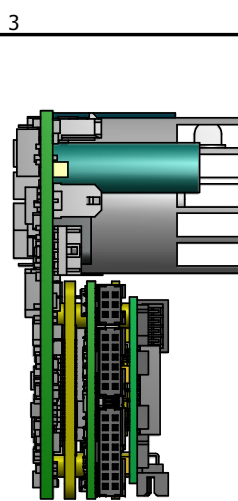
Input Voltage Range: 9V-48VDC

Power Consumption (Preliminary and Subject to Change):

- Hibernate: 0.27W @ 12VDC
- Idle: 0.85W @ 12VDC
- Receive (FSK): 0.85W @ 12VDC
- Receive (PSK): 2.41W @ 12VDC
- Transmit: Dependent on Transducer and Matching Network

Handling: High voltage DC components are present and exposed on the bottomside of the power amplifier. Please take the necessary precautions to avoid shorting circuitry on the board. A minimum of 0.313" clearance is recommended between the bottom side of the circuit board and the nearest mechanical component.

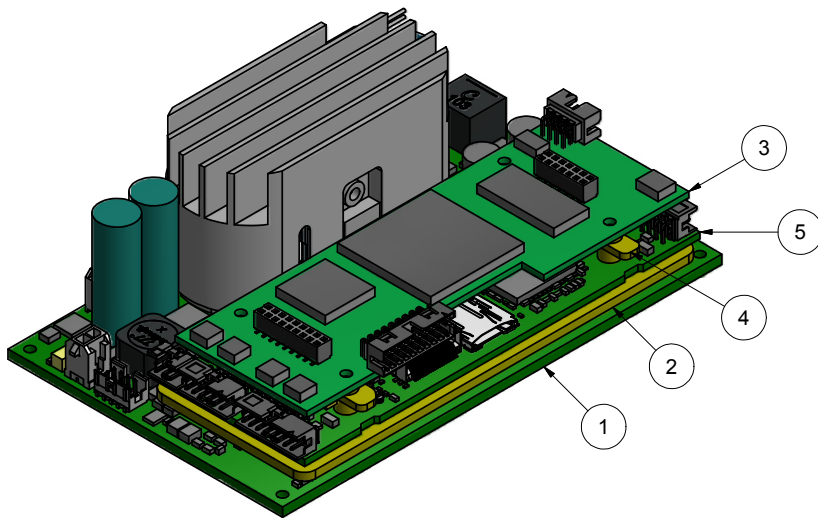
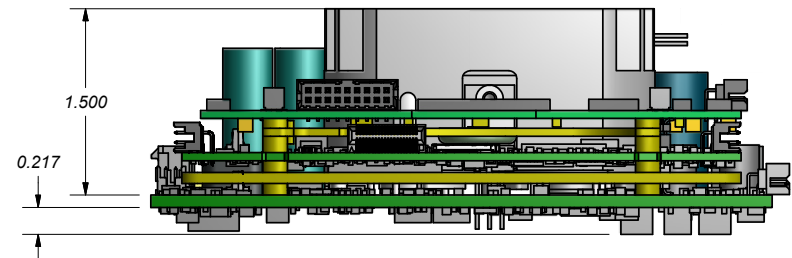
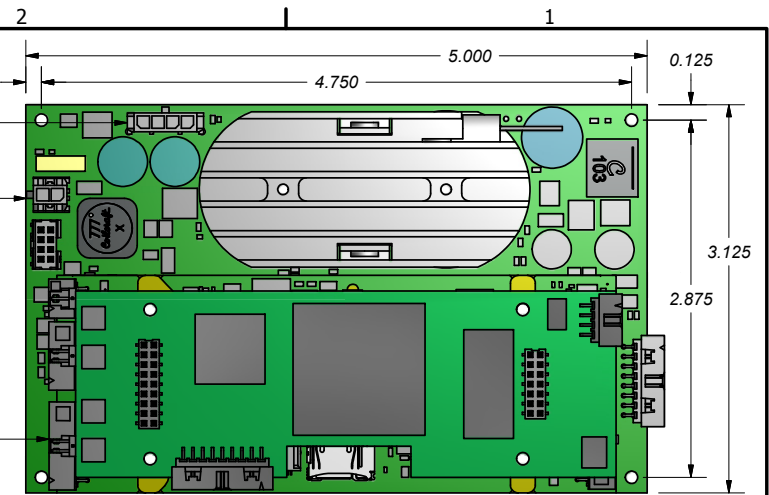
Schematic: Refer to 250035-SCH for typical wiring inter-connects.



PA J5 - Transducer

PA J2 - Power Input

MM J3 - User Serial Ports



Unless Otherwise Noted:

1. Tolerances:	Decimal	Angular
	.XX ± 0.01	± 1 Deg
	.XXX ± 0.005	
2. Dimensions are in Inches		
3. Break All Sharp Edges		
4. Surface Finishes Critical for O-Ring Surfaces		
5. Material:		
6. Finish:		

Designer:	Keenan Ball	11/14/2013
Engineer:	Keenan Ball	11/14/2013

Woods Hole Oceanographic Institution
Acoustic Communications Group
 86 Water Street, Dept. 4 MS 18, Woods Hole, MA 02543

Drawing Title:
Micromodem 2 Single-RX PSK with RFF Power Amplifier

Size:	Cage Code:	Drawing Number:	Rev:
B	88846	250035-ASM	A

Sheet 1 of 2

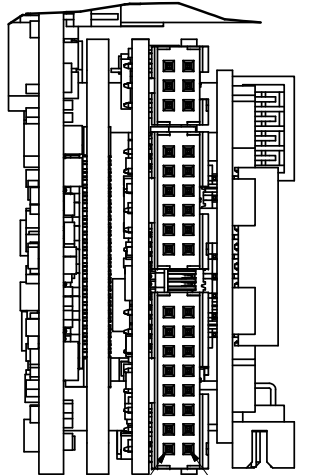
4

3

2

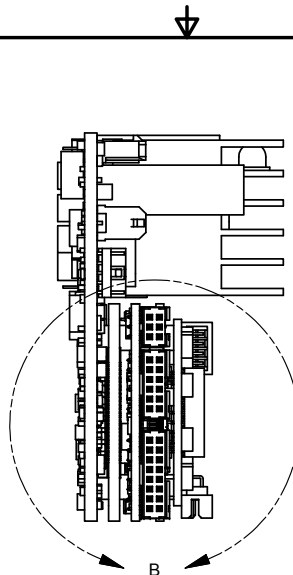
1

DETAIL B
SCALE 2 : 1



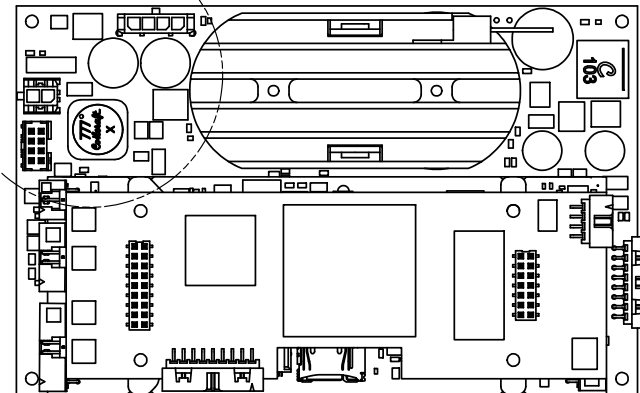
MM J3.2

MM J3.1



B

A



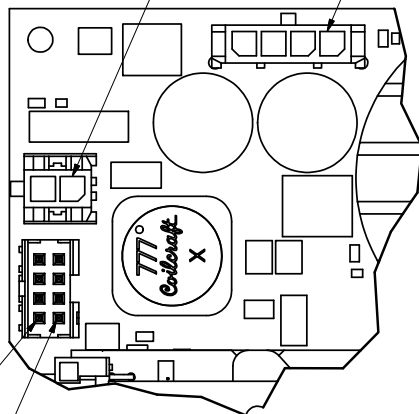
B

B

A

A

DETAIL A
SCALE 2 : 1



PA J2.1

PA J5.1

PA J3.2

PA J3.1

4

3

2

1

Unless Otherwise Noted:

- 1. Tolerances: Decimal Angular
 .XX ± 0.01 ± 1 Deg
 .XXX ± 0.005
- 2. Dimensions are in Inches
- 3. Break All Sharp Edges
- 4. Surface Finishes Critical for O-Ring Surfaces
- 5. Material:
- 6. Finish:



Woods Hole Oceanographic Institution
Acoustic Communications Group

86 Water Street, Dept. 4 MS 18, Woods Hole, MA 02543

Drawing Title:

Micromodem 2 Single-RX PSK with RFF
Power Amplifier

Designer: Keenan Ball

11/14/2013

Engineer: Keenan Ball

11/14/2013

Size:
B

Cage Code:
88846

Drawing Number:
250035-ASM

Rev:
A

Sheet 2 of 2

